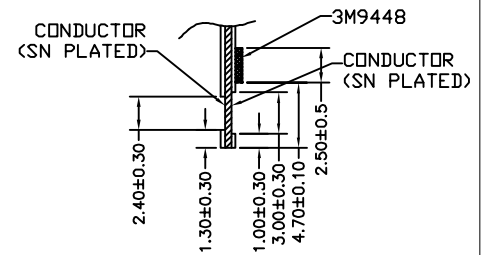
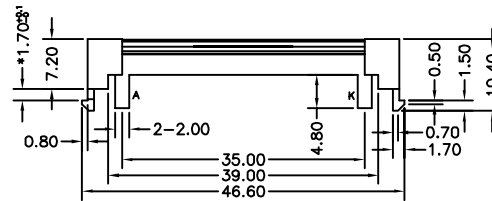
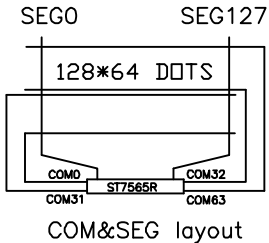
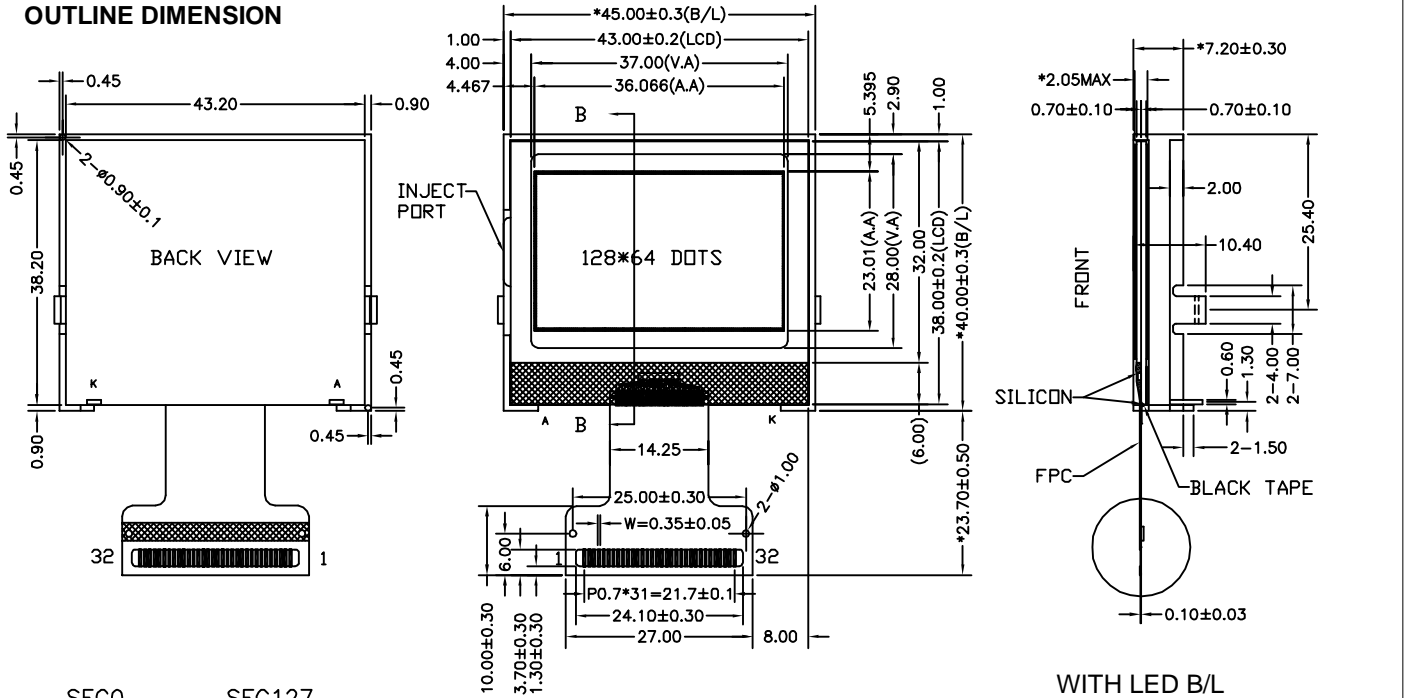


PG-120650 Series

OUTLINE DIMENSION



MECHANICAL DIMENSION	
Overall Dimension (mm)	45.00 X 40.00 X 7.2
Viewing Area (mm)	37.00 X 28.00
Format	128 SEG x 64 COM
Dot Size (mm)	0.252 X 0.33
Dot Pitch (mm)	0.282 X 0.36

ABSOLUTE MAXIMUM RATINGS				
Parameter	Symbol	MIN	MAX	Unit
Supply Voltage for Logic	V _{dd} -V _{ss}	-0.3	3.6	V
Supply Voltage for LCD	V _{lcd}	4.0	13.5	V
Input Voltage	V _{in}			V

ELECTRICAL CHARACTERISTICS (V _{DD} =5.0V ; Top=25° C)					
Parameter	Symbol	MIN	Typical	MAX	Unit
Power Supply Voltage	V _{dd} -V _{ss}		3.0		V
LCD Operating Voltage	V _{op}		9.0		V
LCM Current Consumption	I _{dd}				mA
Backlight Current Consumption	LED (Edge)				mA
	LED (Array)				mA
Driving Method		1/65 Duty 1/9 Bias			

NOTES
IC Controller / Driver: ST7565R or compatible
LCD : Y/G STN, FSTN, NEGATIVE FSTN, NEGATIVE FFSTN
Backlight : White LED, YELLOW-GREEN LED
Viewing Angle: 6:00, 12:00
Operating Temperature : -20° C ~ +70° C
Storage Temperature : -30° C ~ +80° C

PIN ASSIGMENT			
Pin No.	Symbol	Pin No.	Symbol
1	IRS	17	VOUT
2	HPMB	18	VSS
3	PSB	19	VDD
4	C86	20	D7
5	VR	21	D6
6	V0	22	D5
7	V1	23	D4
8	V2	24	D3
9	V3	25	D2
10	V4	26	D1
11	CAP4+	27	D0
12	CAP2-	28	RD(E)
13	CAP2+	29	WR(RW)
14	CAP1+	30	AO
15	CAP1-	31	/RES
16	CAP3-	32	/CS1

